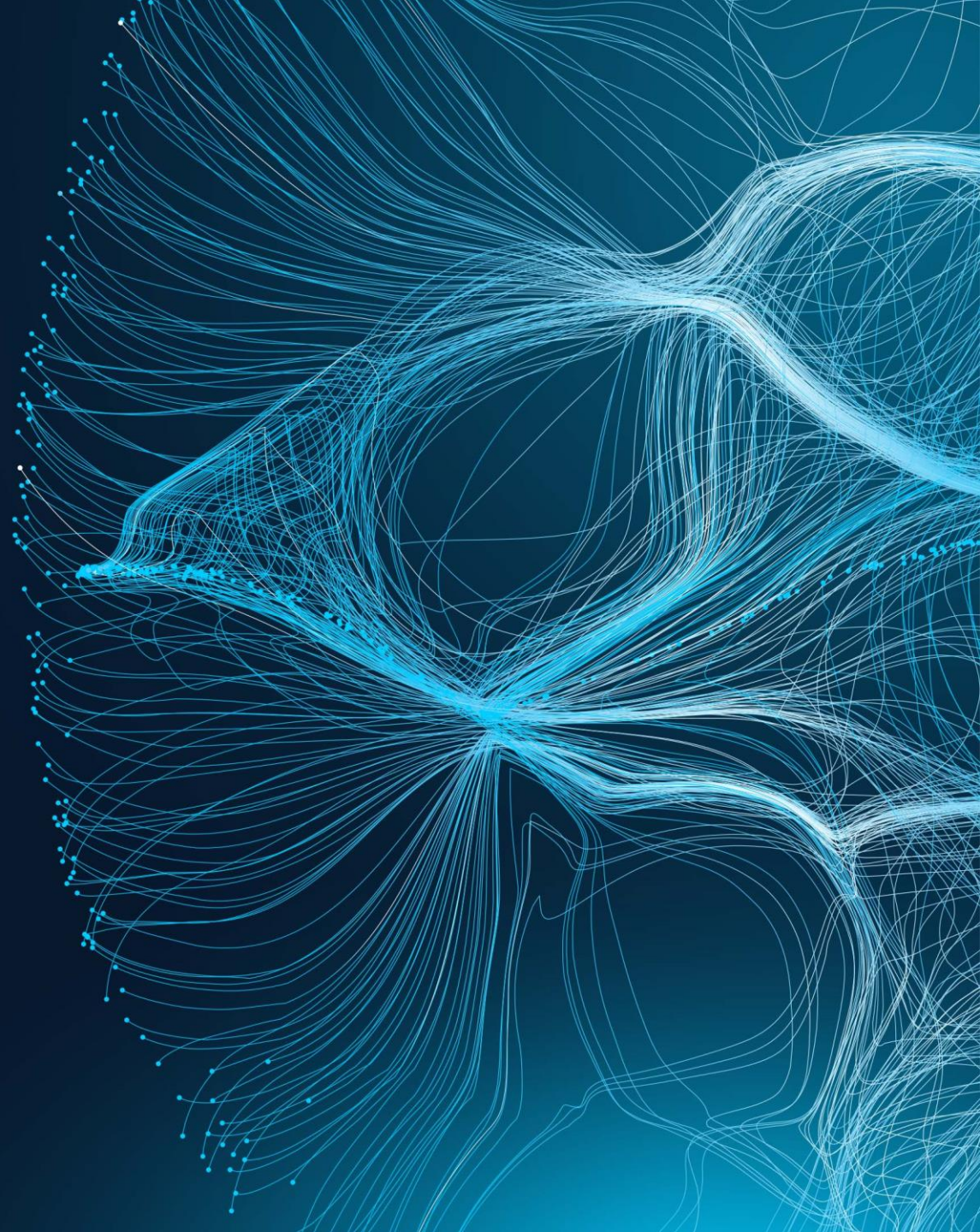




# Přínosy AI pro správu a bezpečnost IT infrastruktury

Jaroslav Martan, [jmartan@cisco.com](mailto:jmartan@cisco.com)

11. června 2026



# Cisco AI - Úlohy

- **Datová suverenita** – vlastní data, vlastní práce s AI (modely, processing)
- **Aplikovaná AI v IT (AIOps)** – sítě, bezpečnost, collaboration... asistenti
- **Součást produktu vs. vlastní řešení** – AI Assistants, Vibe Coding
- **Data Science** – machine learning
- **Agentic** – AI Canvas, business-to-consumer (chatbot, voicebot)

# AI use cases across industries



## Knowledgebase copilots

AI assistants



## Content and code generation

Text | Images | Video | Code



## Virtual agent and chatbots

Specialized domain |  
Specific chatbots



## Visual Computing

Digital Twins | Video Analytics |  
Imaging and Diagnostics



## Language translation

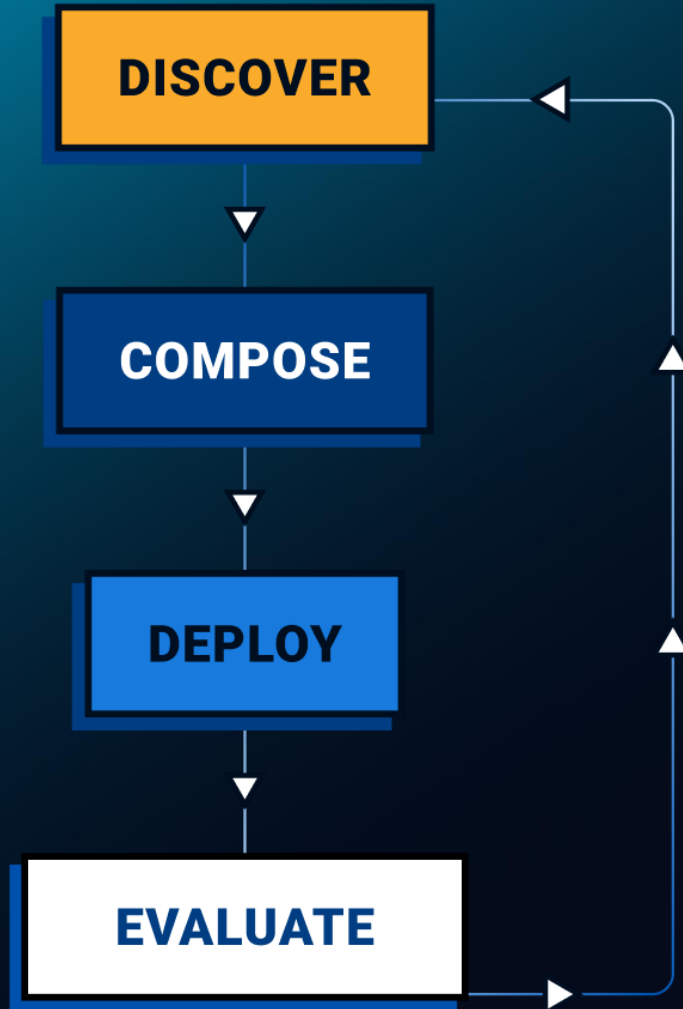
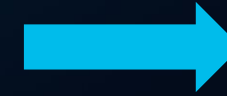
Multilingual real-time  
communication



## Detection and prediction

Forecasts |  
Anomalies | Insights

# Cisco's Strategic AI Investments



# AGNTCY



# Cisco's Deep Network Model

Purpose-built for networking, expert accuracy

- More precise reasoning for troubleshooting, configuration, and automation
- **Fine-tuned** on 40+ years of expertise and expert-vetted for accuracy
- Evolves with live telemetry and real-world Cisco TAC and CX insights

Outperforms general-purpose models by ~20%



Benchmark Based on CCIE-style multiple choice questions benchmark, October 2025

# Cisco AI-related Acquisitions

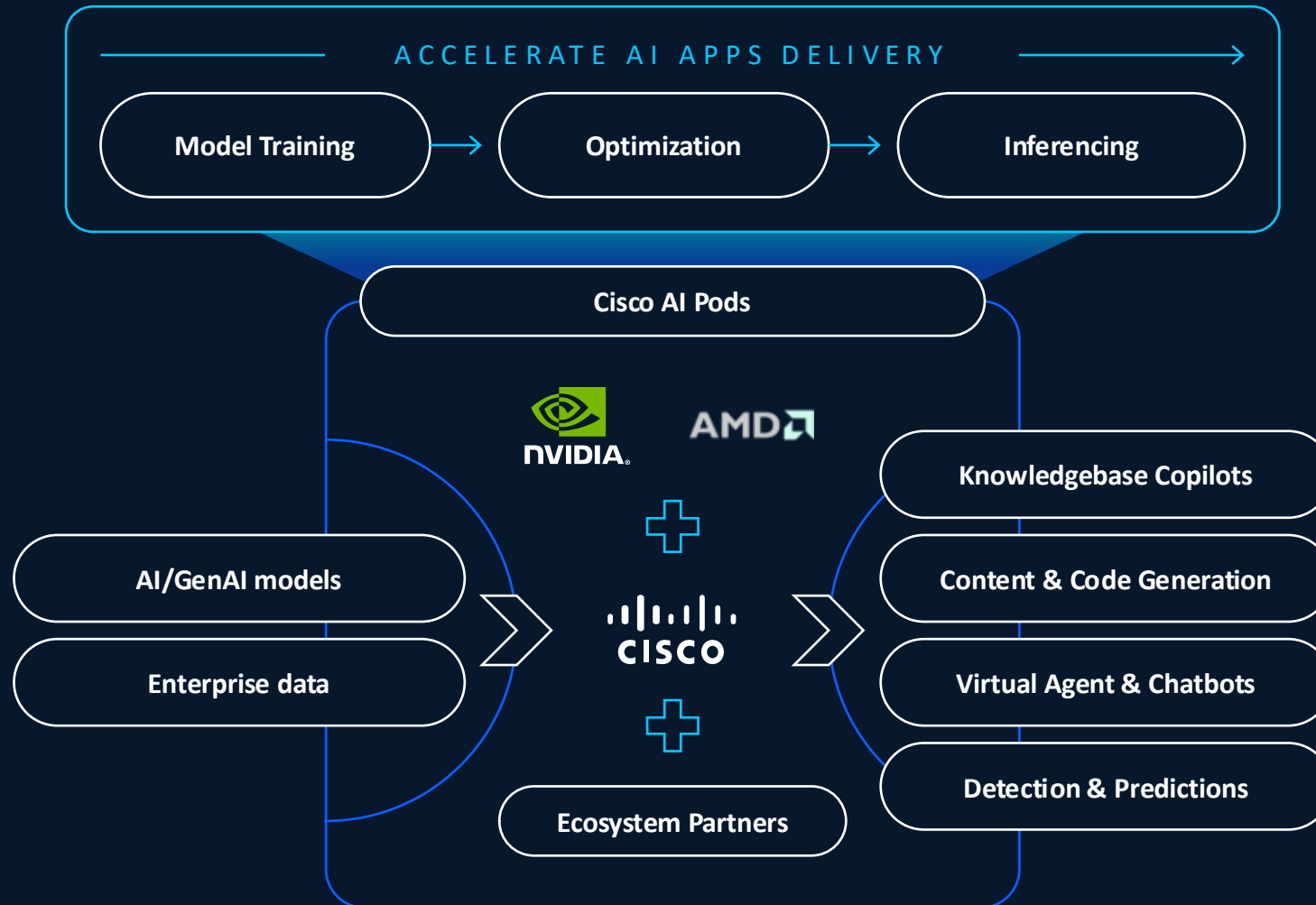
- **Galileo Technologies, Inc.** (April 9, 2026) - trust and reliability in AI systems
- **EzDubs, Inc.** (November 14, 2025) - AI-driven speech-to-speech translation across 31 languages
- ~~**NeuralFabric Corp.** (November 21, 2025) - domain-specific Small Language Models (SLMs) using proprietary data, deployable on SaaS and on-premises~~
- **Discovered Intelligence** (Aura Asset Intelligence) (August 25, 2025) - asset and risk intelligence solutions integrated with Splunk
- **Deeper Insights AI Ltd.** (October 3, 2024) - AI services
- **Robust Intelligence** (August 26, 2024) – AI Defense
- **Splunk** (September 21, 2023) - cybersecurity and observability



# Sovereign AI - AI Pods

# Cisco AI Pods

Accelerate the delivery of trusted Agentic and Physical AI applications from core to the edge



# Technical Use Cases

## AI Workloads POD

Training

Optimization

Inferencing

Build or bring your own AI workload

## AI Services POD

AI Defense

Splunk

VAST - AI Data Platform

Collab AI Pod, ...

AI Security, Observability and Data Services

AI Software



Platform Software



Cisco Networking & Optics



Cisco Compute



Partner Storage



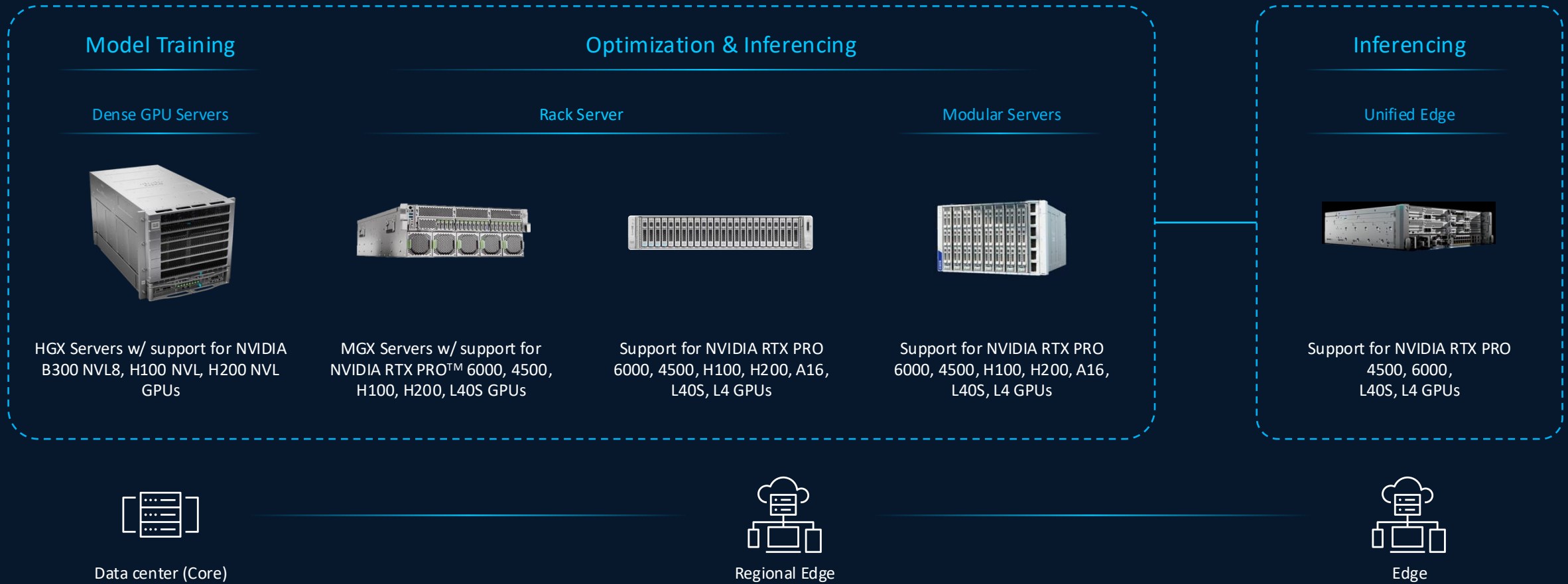
Cisco Security



Splunk Observability



# Broad range of Cisco accelerated computing from Core to Edge



CISCO INTERSIGHT UNIFIED FLEET MANAGEMENT

# AIOps



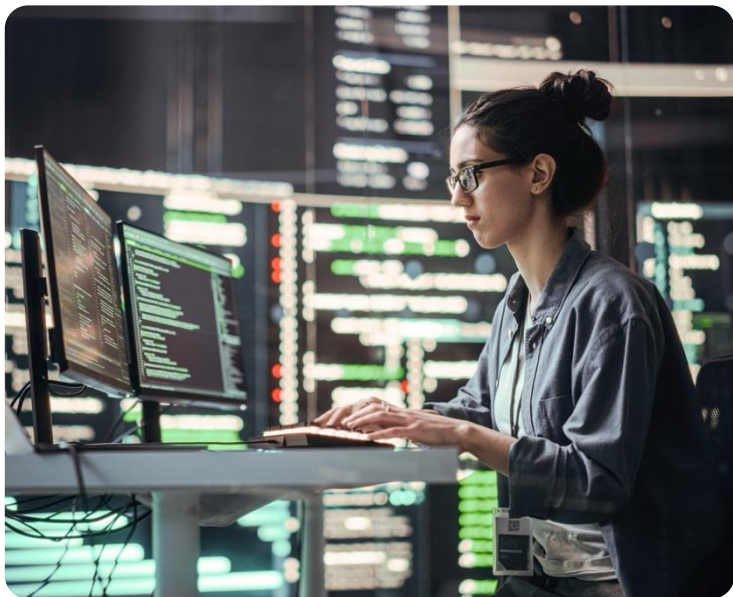
**andrew chen**



@andrewchen · 15 h

hot take :) The biggest and most productive people in the AI era are the folks who are already good at their jobs. AI as a multiplier, not an equalizer/democratizer

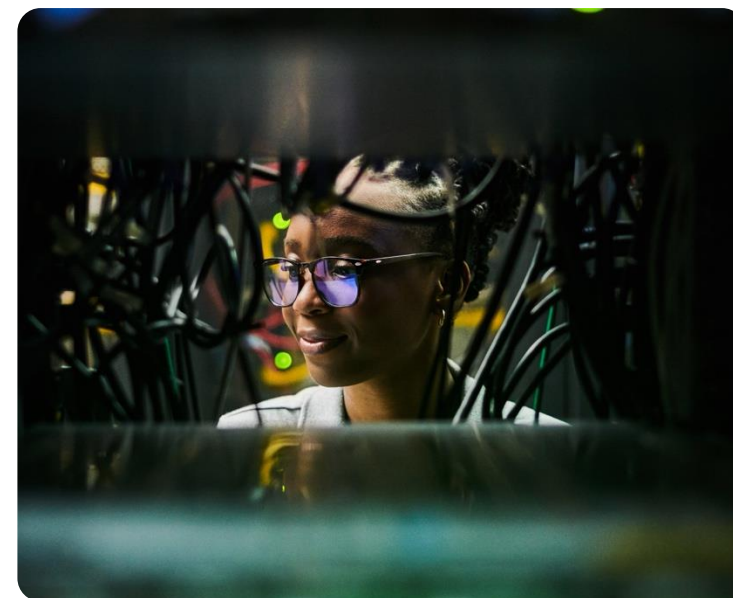
# Different AI “Hats” for Network Engineers



**User of AI Tools**



**Builder of AI  
Tools/Infrastructure**



**User of Custom Tools  
(no AI)**

# AgenticOps

Cross-domain

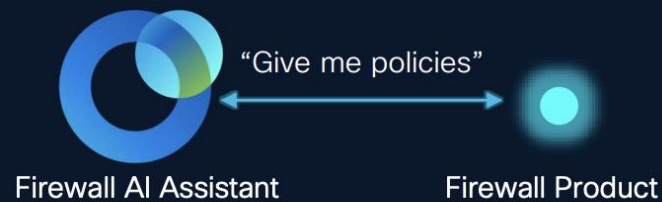
Multiplayer

Purpose-built models

# AI Assistants use skills to enable intra-product experience

## Skills

- **Definition:** Capabilities of an AI Assistant for the local product it's integrated with.









Documentation Summarization

Troubleshooting

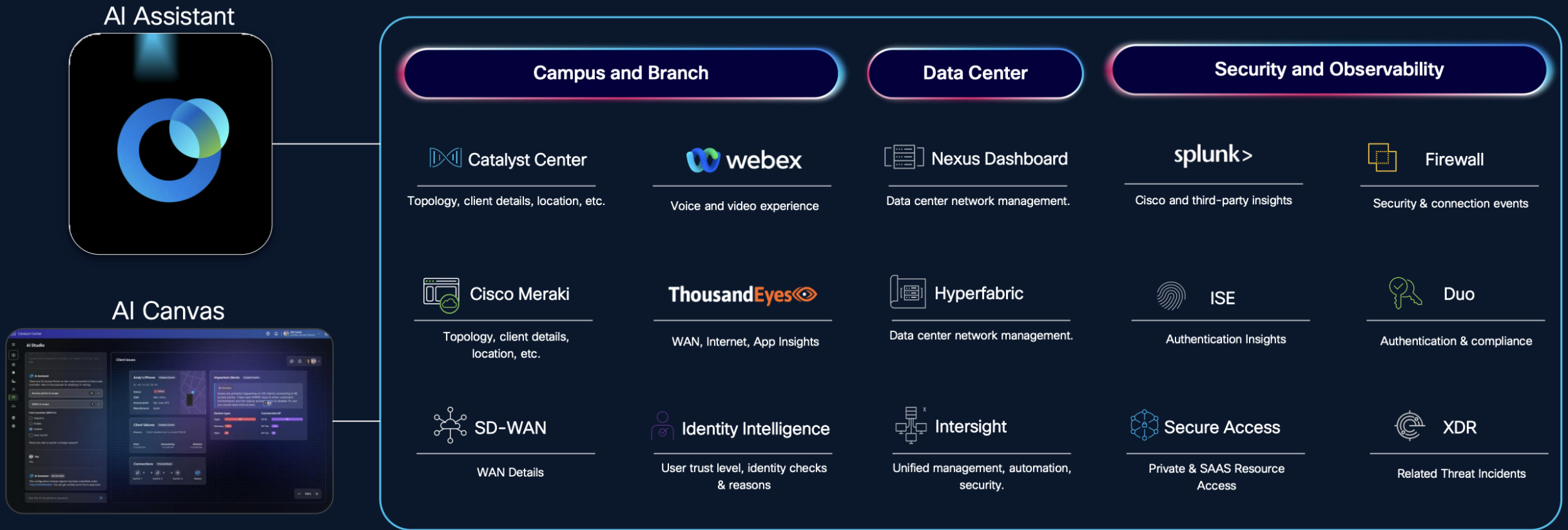
Optimization

Configuration

# Individual AI Assistants Are Integrated Across Cisco

 <b>Security</b>	Firewall, Secure Access, Hypershield, Duo, Identity Intelligence, Splunk Enterprise Security, ISE
 <b>Networking</b>	Meraki, Catalyst Center, Catalyst SD-WAN, ThousandEyes, Intersight, Mobility Services
 <b>Observability</b>	Splunk Observability (Cloud, ITSI, AppDynamics)
 <b>Data</b>	Splunk Platform
 <b>Collaboration</b>	Webex Control Hub
 <b>Service Ops</b>	Customer Experience

# Unifying Cisco AI Assistants enables a network of AI Agents across domains and enables cross-product skills



- Network London
- Secure Connect
- Network-wide**
- Assurance
- Security & SD-WAN
- Switching
- Wireless
- Systems Manager
- Cameras
- Sensors
- Insight
- Organization
- Security New
- Automation
- Access Manager New

View old version

+ Add client

# Clients

Uplinks 1 total

All Online

Switches 3 total

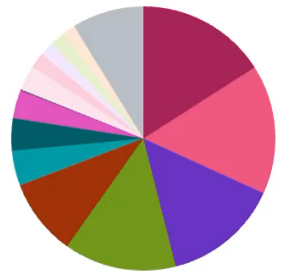
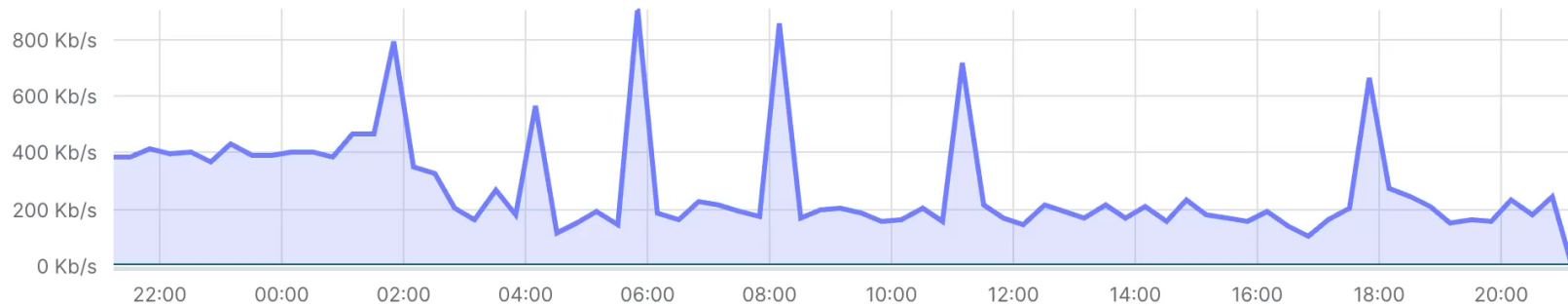
All Online

Access points 3 total

1 Alerting

## Usage and clients

Usage 1.4 GB (↓ 333.01 MB, ↑ 1.08 GB)



Applications details

Search for clients

Filters 16 results

Download

<input type="checkbox"/>	Last seen (UTC-0)	Usage	Device type, OS	IPv4 address	Policy	
<input type="checkbox"/>	Nov 25 2025 21:13	528.36 MB	Other	172.17.10.122	Normal	
<input type="checkbox"/>	Nov 25 2025 21:13	191.43 MB	Other	172.17.10.121	Whitelisted	
<input type="checkbox"/>	Nov 25 2025 21:13	135.42 MB	Windows 10	172.17.10.109	Normal	
<input type="checkbox"/>	Nov 25 2025 21:13	127.56 MB	Other	172.17.10.119	Sales	

# AI Packet Analyzer

- **AI PCAP analyzer**

uses multi-modal AI models using contextualized PCAP model, Client events and configuration data

- **Intelligent capture**

automatically seize the moments of client failure and upload PCAP files to AI Cloud

- **AI PCAP model**

uses supervised fine-tuning and RLHF to analysis client packet exchanges

- **Generative AI**

translate & summarize dozens of PCAP exchanges into human-readable text

The screenshot displays a user interface for an AI Packet Analyzer. At the top, there is an alert titled "Authentication failed by EAPOL timeout" with a yellow warning icon and the word "Active" in a yellow box. Below the title, a subtitle reads "Problem on deviceABC affecting wifi. Last alerted in NetworkXYZ on Feb 23 2024 09:32 PST." There are two tabs: "Details" (selected) and "Suggested actions" (with a count of 2). A "Client connectivity" bar chart shows a timeline from 02:00 to 16:00 with green and red segments. Below this, it says "Impact" and "2 applications". The "More details" section explains: "Client didn't respond to EAP-ID request from AP. AP attempted three times but client didn't reply back at all. Check if client device has username from its supplicant setting. Discovered on packet number #13~#20." A "Packet capture timeline" section features a diagram showing a "Client" (laptop) and an "AP" (access point) with "Placeholder icons" for each. A blue dashed arrow labeled "Discover" points from the Client to the AP. A red arrow labeled "auth bad password" points from the AP back to the Client. Below the diagram, it says "4 packets have issues". A table titled "Problematic packets" lists four packets with their source, destination, and info. At the bottom, there are buttons for "Documentation on this alert", "Dismiss alert", and "Take action".

**Authentication failed by EAPOL timeout** Active

Problem on **deviceABC** affecting wifi. Last alerted in NetworkXYZ on Feb 23 2024 09:32 PST.

**Details** Suggested actions **2**

Client connectivity

Impact  
**2 applications**

**More details**

Client didn't respond to EAP-ID request from AP. AP attempted three times but client didn't reply back at all. Check if client device has username from its supplicant setting. Discovered on packet number #13~#20.

Packet capture timeline Auth bad password

Client AP

Placeholder icons Discover Placeholder icons

Placeholder icons auth bad password Placeholder icons

Problematic packets 4 packets have issues

AI-driven analysis has uncovered anomalies in the following four packets, indicating potential data transmission issues. For a detailed explanation of these findings, please review the full [pcap analysis](#).

No.	Source	Destination	Info
1	10.20.30.41	233.89.188.1	47645 → 1000 Len = 4
2	10.20.30.41	233.89.188.1	47645 → 1000 Len = 4
3	::	ff02::1:ff04:7741	Neighbor solicitation
4	::	ff02::1:ff04:7741	Neighbor solicitation

[Documentation on this alert](#) Dismiss alert Take action

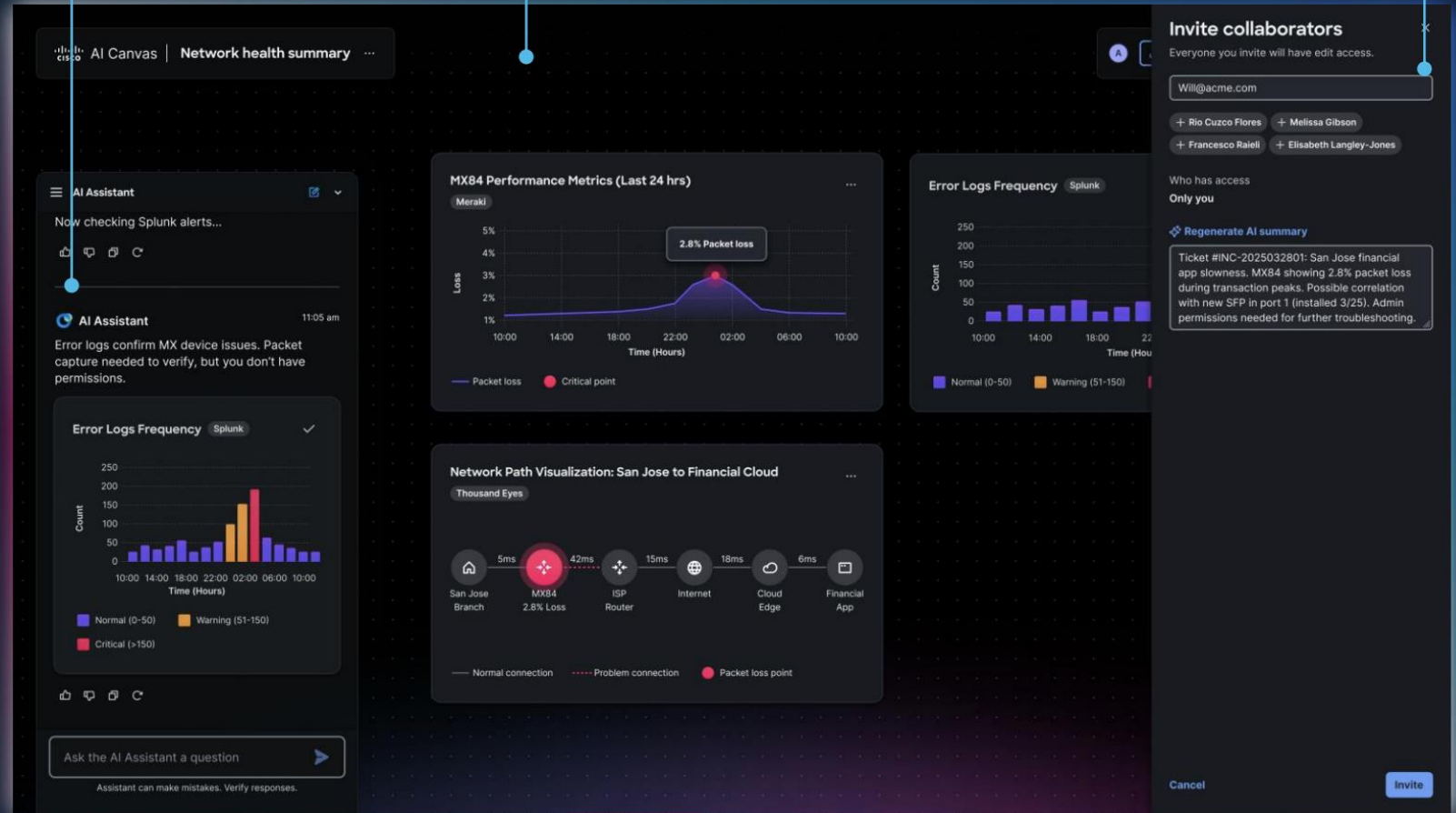
AI Assistant

Shared Workspace

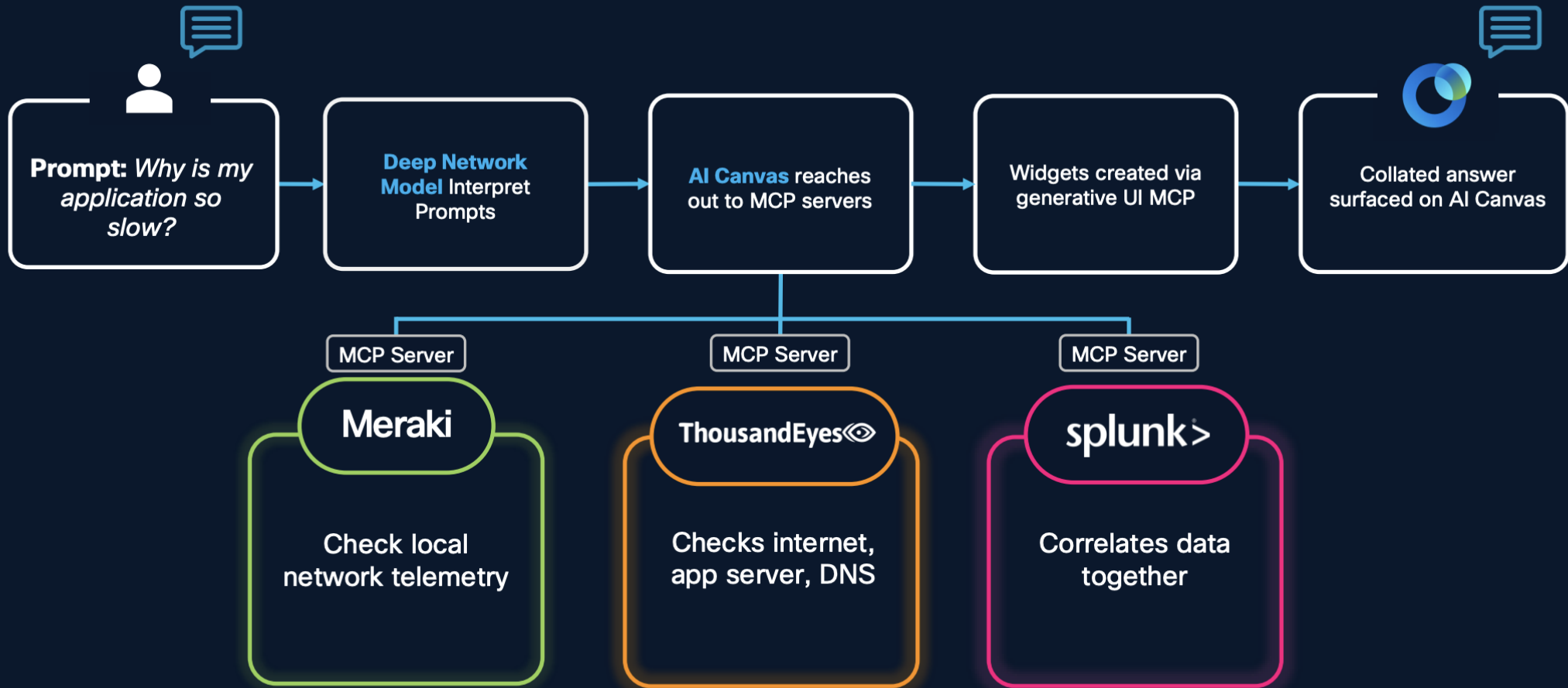
Users

# AI Canvas

- Single canvas for cross domain troubleshooting
- Generative UI with reasoning built-in
- Keeps NetOps, SecOps, IT and execs on same page



# Putting Together AI Canvas's Components



# Cisco IQ™

Where human expertise meets agentic intelligence



# Cisco AIOps

AI Assistants – specific to the product or area of expertise

AI Canvas – environment for solving complex IT issues

Cisco IQ – inventory, compliance, proactive support

# Security

NEW

# Security Cloud Control

## Industry's first multi-vendor intent-based policy



Absorb and optimize  
existing rules

Change enforcement  
points, not policy

No rip and  
replace

# Security Cloud Control

Define policy once and enforce anywhere

Cisco Firewalling

AI Defense

3rd Party Firewalls

Secure Firewall

Secure Workload

Hypershield

Secure Access (FW as a service)

Secure Router NGFW



Unified AI Assistant:  
Simplify policy administration **by up to 70%**

# Streamline policy and device control



Centralize coordination of all ASA and FTD form factors eliminating complexity across diverse environments

Ensure consistent security policies and compliance reducing misconfigurations

Automate object updates saving time for strategic initiatives

Retain on-premises FMC or manage firewalls directly from Security Cloud Control allowing you to migrate to the cloud at your own pace

# AI assistance when you need it



# The AI Defense Solution



# Cisco AI for Data Science - Splunk

# Přizpůsobte AI use cases

## s AI Toolkit (dříve MLTK)

### ve Splunk Cloud a Splunk Enterprise

- Experimentujte a vytvářejte modely nad svými daty pomocí interaktivního průvodce
- Vybírejte z více než 50 připravených algoritmů, nebo si nainportujte vlastní model.
- Trénujte a nasazujte modely přímo pomocí vyhledávacích příkazů a okamžitě je využívejte v praxi.

The screenshot displays the 'Showcase' page of the Splunk Machine Learning Toolkit. The navigation bar at the top includes links for Showcase, Experiments, Search, Models, Settings, Docs, and Video Tutorials. The main content area is titled 'Showcase' and contains a welcome message. Below the message, there are filters for 'View examples by' (ML Operation, Industry) and a 'Filter Examples' button. The page features four example cards, each with a title, a description, a small chart icon, and the number of examples available:

- Predict Fields:** View examples that predict the value of a numeric or categorical field using the values from other fields in the event. 15 Examples Available.
- Detect Outliers:** View examples that detect numeric and categorical values that differ significantly from values in the rest of the data. Identified outliers are indicative of interesting, unusual, and possibly dangerous events. 14 Examples Available.
- Forecast Time Series:** View examples that predict the next value in a sequence of time series data by using past time series data. 9 Examples Available.
- Cluster Events:** View examples that partition events with multiple fields into groups of events based on the values of those fields. 8 Examples Available.

## Plot the outliers [↗](#)

```
| inputlookup logins.csv | predict logins as prediction algorithm=LLP future_timespan=150 holdback=0 | where prediction!=** AND logins!=** | eval residual = prediction - logins
```

```
| streamstats window=72 current=true median("logins") as median // calculate the median value using a sliding window
```

```
| eval absDev=(abs('logins'-median)) // calculate the absolute deviation of each value from the median
```

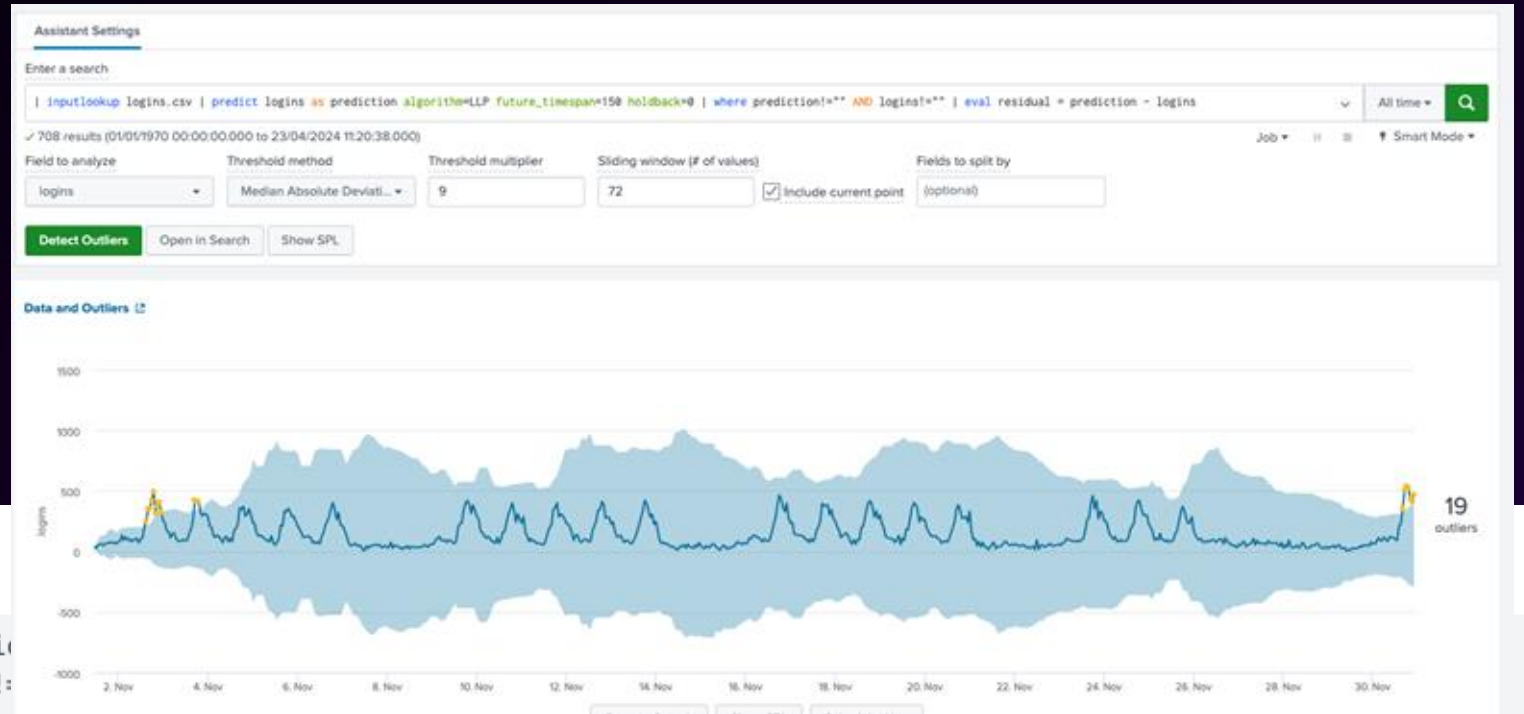
```
| streamstats window=72 current=true median(absDev) as medianAbsDev // use the same sliding window to compute the median absolute deviation
```

```
| eval lowerBound=(median-medianAbsDev*exact(9)), upperBound=(median+medianAbsDev*exact(9)) // calculate the bounds as a multiple of the median absolute deviation
```

```
| eval isOutlier=if('logins' < lowerBound OR 'logins' > upperBound, 1, 0) // mark values outside the bounds as outliers
```

```
| fields _time, "logins", lowerBound, upperBound, isOutlier, *
```

```
// format the columns to be in the order expected by the Outliers Plot visualization
```



# Model Longevity

